

## Water Wash Control Panel

### Hot Water Wash/Cold Water Spray

# AP10C

Automatic Control, Single Sequence Wash for up to 50-ft (15 m) of water wash hood

#### General Description

Each water wash hood or group of hoods requires a control panel. The single sequence water wash control panel model AP10C is for type "CD", "CF", & "CT" water wash hoods.

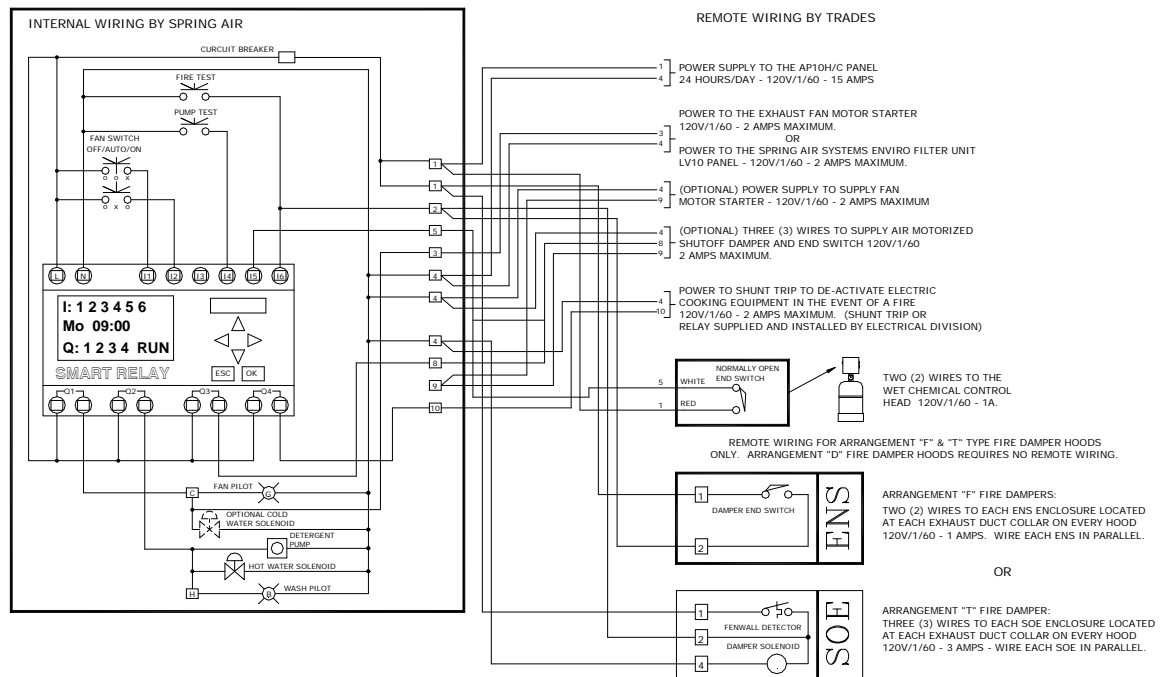
These control panels contain the electrical and plumbing required to automatically operate the exhaust fan, the continuous cold water spray, and washing cycle. The continuous cold water spray causes the grease particles to congeal forming larger globules. The larger particles are more readily removed increasing the grease extractor efficiency before entering the VORTEX collection chamber. The model AP10C is a microprocessor control with an ON/AUTO/OFF selector switch. The single sequence wash can wash up to 50 feet (15m) of water wash hood. When the selector switch is in the AUTO position, on and off control is automatic depending on

the times set on the microprocessor time clock. The cold water spray operates continuously while the exhaust fan is running. Every time the exhaust fan is shut off manually or automatically, the cold water spray shuts off and the groups of hoods connected to the control panel are washed. At the end of the wash cycle the panel remains idle until the next ON and OFF sequence. Refer to the *Spring Air Systems Hood Engineering Manual* for detailed description of the control panel sequence of operation.

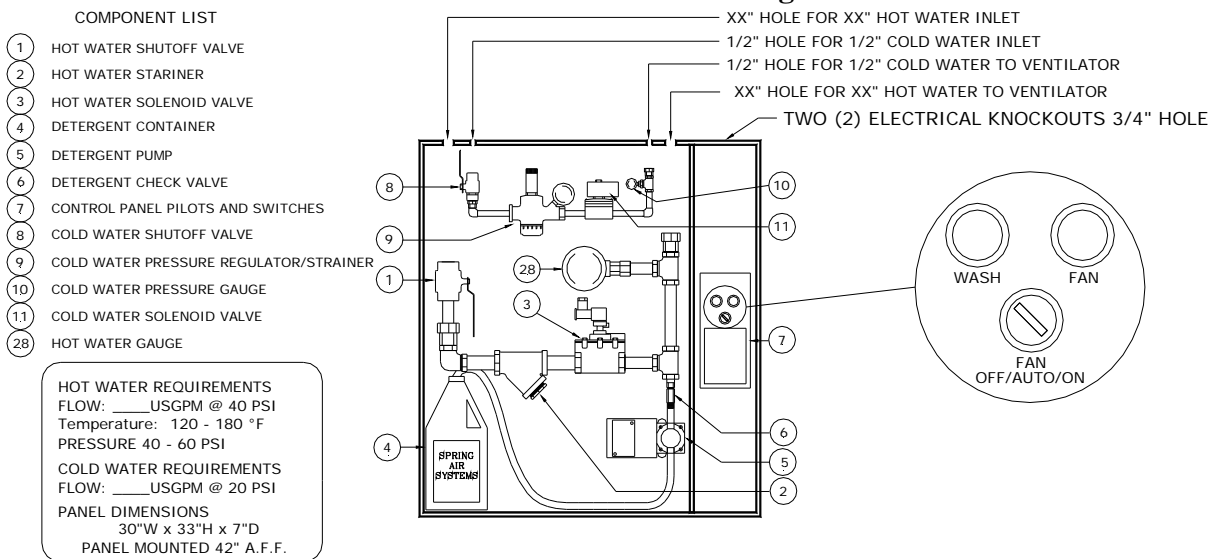
#### Hoods with CF or CT Fire Dampers

In the event that CF or CT UL/ULC listed fire damper assembly activates the fire damper closes, the exhaust and supply fans shut off, and both hot water wash solenoids turn on to flood the interior of the wash extractor with water.

### Water Wash Panel Electrical Schematic



## Water Wash Panel Plumbing



### Engineering Data

| Length of Hood per Wash Sequence |            | Control Panel Hot Water Connections |    |
|----------------------------------|------------|-------------------------------------|----|
| ft                               | m          | in                                  | mm |
| Up to 10                         | Up to 3    | 0.75                                | 19 |
| Up to 20                         | Up to 6    | 1.00                                | 25 |
| Up to 35                         | Up to 10.5 | 1.25                                | 32 |
| Up to 50                         | Up to 15   | 1.50                                | 3  |

**Notes:**

1. All control panels are 30" x 33" x 7" (840 mm x 914 mm x 203 mm)
2. The DB hood has an equivalent length of 1.5 the actual length of purposes of using this chart.

### Installation

- The total length of hood connected to the control panel determines the sizes of the inlet and outlet pipe connections. Refer to the Engineering Data Chart to the left for Pipe size Vs Hood length.
- The remote piping must meet all local plumbing codes. The control panel must be installed with protection to stop the flow of detergent back into the potable water supply. Spring Air Systems will always pre-pipe the detergent line inside the water wash, plumbing enclosure panel unless advised otherwise prior to shipment.
- The cold water inlet and outlet connections are always 0.5" (13mm). Each hood is connected to the panel with a 0.5" line.

### Spring Air Systems Model No. AP10C Wash Panel Specification

The water wash control panel shall be a Spring Air Systems model AP10C, hot water wash, cold water spray, automatic, single wash sequence, UL/ULC listed, and CSA certified. The panel shall include an integral microprocessor based seven-day/24 hour clock with one weekdays and one weekend settings and manual override. The stainless steel water wash control panel shall contain all the electrical and plumbing components to operate the exhaust fan, cold water spray, and water wash cycle. The electrical section shall include a microprocessor adjustable timer, an off/auto/on fan selector switch, and a wash on pilot light. The plumbing section shall include a hot water solenoid valve, hot water shut off valve, hot water line strainer, pressure/temp gauge, detergent pump, detergent check valve, and one litre of detergent. The cold water components shall include a cold water solenoid valve; cold water shut off valve, cold water pressure regulator/strainer, and a cold water pressure gauge.

The panel shall be either wall mounted or recessed where shown ready for interconnection of the mechanical and electrical services by the mechanical and electrical divisions as per the manufacturer instructions.

### Engineering Data

- Item Number: - \_\_\_\_\_
- Model Number: - AP10C-XX
- Panel Dimensions: - 30" X 33" X 7"
- Hot Water Inlet Connection: - 1"
- Cold Water Inlet Connection: - 1/2"
- Cold Water Outlet: - 1/2"
- Hot Water Outlet: - 1"
- No. of Sequences: - 1
- Valve Size: - \_\_\_\_\_
- Total Hot Water Flow: - \_\_\_\_\_
- Total Cold Water Flow: - \_\_\_\_\_
- Electrical: - 120v/1/60 - 15 AMPS.