

Water Wash Control Panel

Hot Water Wash

AP20H

Automatic Control, Two Sequence Wash for up to 100-ft (30 m) of water wash hood

General Description

Each water wash hood or group of hoods requires a control panel. The two-sequence water wash control panel model AP20H is for type "HD", "HF" & "HT" type water wash hoods.

These control panels contain the electrical and plumbing required to automatically operate the exhaust fan, two wash cycles and fire damper (HF & HT types only). The model AP20H is two-sequence automatic control with an ON/AUTO/OFF selector switch. Each wash sequence wash can wash up to 50 feet (15 m) of water wash hood.

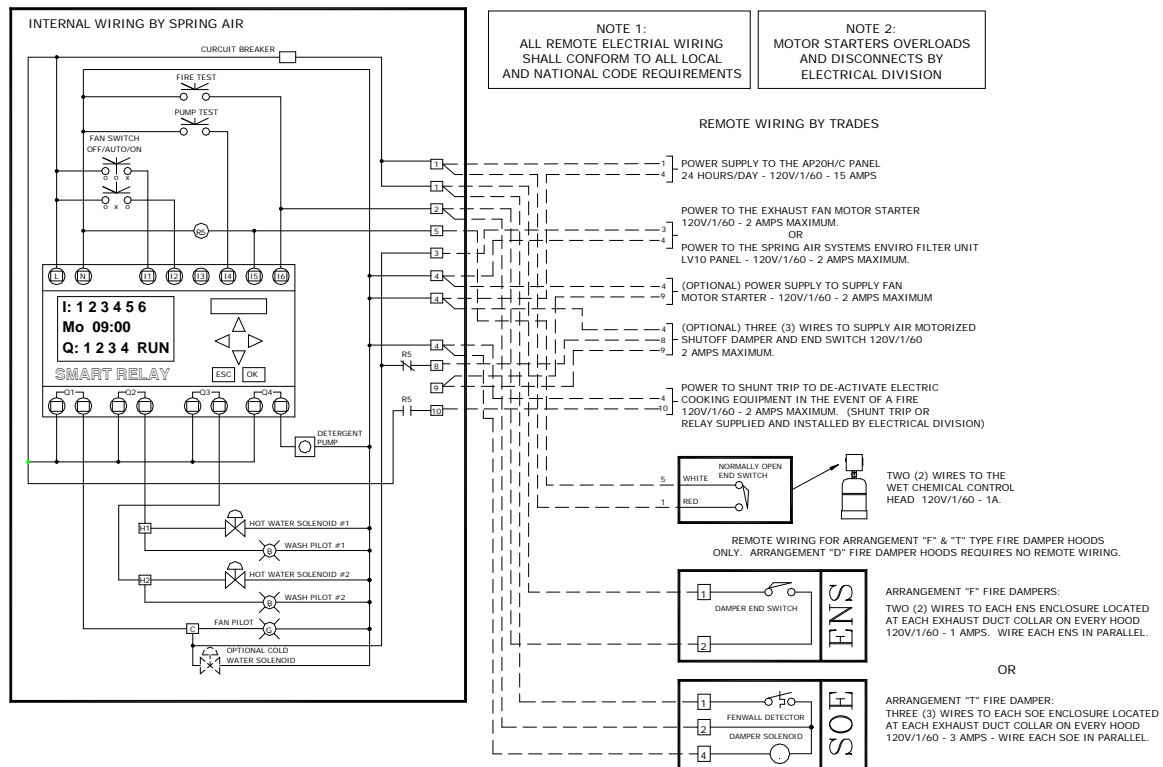
When the selector switch is in the AUTO position, on and off control is automatic depending on the times set on the 24-hour microprocessor clock. Each time the exhaust fan is shut off manually or automatically,

the groups of hoods connected to the control panel are washed. The hoods are connected to the first or second wash sequence. At the end of the wash cycle the panel remains idle until the next ON and OFF sequence. Refer to the Spring Air Systems Hood Engineering Manual for detailed description of the control panel sequence of operation.

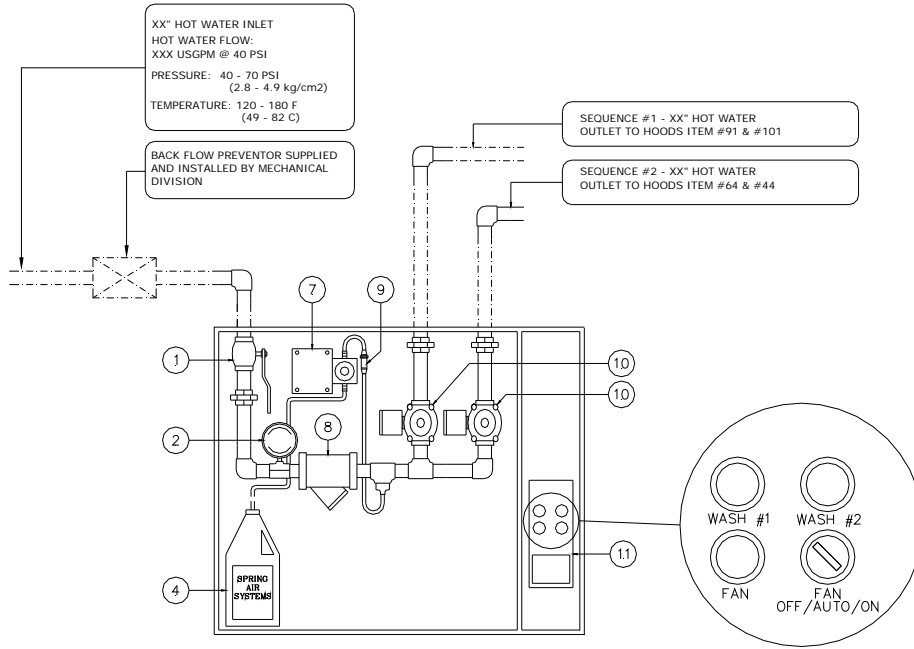
Hoods with HF or HT Fire Dampers

In the event that HF or HT UL/ULC listed fire damper assembly activates the fire damper closes, the exhaust and supply fans shut off, and both hot water wash solenoids turn on to flood the interior of the wash extractor with water.

Water Wash Panel AP20H Electrical Schematic



Water Wash Panel AP20H Plumbing



COMPONENT LIST

- ① HOT WATER SHUTOFF VALVE
- ② PRESSURE / TEMPERATURE GAUGE
- ④ DETERGENT CONTAINER
- ⑦ DETERGENT PUMP
- ⑧ HOT WATER STRAINER
- ⑨ DETERGENT CHECK VALVE
- ⑩ HOT WATER SOLENOID VALVE
- ⑪ CONTROL PANEL PILOTS AND SWITCH

Engineering Data

Length of Hood per Wash Sequence		Control Panel Hot Water Connections	
ft	m	in	mm
Up to 10	Up to 3	0.75	19
Up to 20	Up to 6	1.00	25
Up to 35	Up to 10.5	1.25	32
Up to 50	Up to 15	1.50	3

Notes:

- All control panels are 40" x 36" x 7" (1016 mm x 914 mm x 203 mm)
- The DB hood has an equivalent length of 1.5 the actual length of purposes of using this chart.

Installation

- The total length of hood connected to the control panel determines the sizes of the inlet and outlet pipe connections. Refer to the Engineering Data Chart to the left for Pipe size Vs Hood length.
- The remote piping must meet all local plumbing codes. The control panel must be installed with protection to stop the flow of detergent back into the potable water supply. Spring Air Systems will always prepipe the detergent line inside the water wash, plumbing enclosure panel unless advised otherwise prior to shipment.

Spring Air Systems Model No. AP20H Wash Panel Specification

The water wash control panel shall be a Spring Air Systems model no. AP20H automatic, two wash sequence, UL/ULC listed, and CSA certified.

The panel shall include an integral microprocessor with seven-day/24 hour timer with three weekday and one-weekend settings. The stainless steel water wash control panel shall contain all the electrical and plumbing components to operate the exhaust fan, and two water wash cycle.

The electrical section shall include a microprocessor with 24-hour clock, adjustable timers, an off/auto/on fan selector switch, and a wash #1 and wash #2 pilot lights. The plumbing section shall include a hot water solenoid valve, hot water shut off valve, hot water line strainer, pressure/temp gauge, detergent pump, detergent check valve, and one litre of detergent.

The panel shall be either wall mounted or recessed where shown ready for interconnection of the mechanical and electrical services by the mechanical and electrical divisions as per the manufacturer instructions.

Engineering Data

Item Number _____
 Model Number: AP20H-_____
 Panel Dimensions 40" X 36" X 7"
 Hot Water Inlet: _____
 Hot Water Outlet #1 _____
 Hot Water Outlet #2 _____
 No. of Sequences: Two
 Hot Water Flow _____ USGPM
 @ 40 PSIG
 Electrical: 120v/1/60 - 15 AMPS.